

# pspix2

## By your side, to care for everyone

ACTEON® place its 20 years of expertise at your service and those of your patients.

The first simple and intuitive personal imaging plate scanner provides outstanding images and was designed to free practitioners from constraints.

Whatever your patient's morphology or pathology, the PSPIX<sup>2</sup> adapts to your needs. As your personal assistant or in collaborative mode, experience high productivity without compromising on quality.

- 1 - **Striking Contrast** for a more reliable Diagnosis
- 2 - **The Smallest Scanner** on the market
- 3 - **The Fastest Scanner** on the market
- 4 - The **most intuitive** Scanner
- 5 - **Thin and flexible imaging plates** of various sizes for adaptability and outstanding patient comfort.



**Special Offer Buy PSPIX2 \$12,990.00 RRP**

# sopix series



### SMART DOSE

The ACE® technology protects the image from over exposure for an optimal quality without any effort.



### SMART FLOW

Our sensors adapt to all clinical cases, all morphologies and all software, to provide you and your patients greater comfort.



### SMART TECHNOLOGY

Our latest generation of digital sensors provide a sharp X-ray image for an easy reading of the different dental tissues.

**Special Offer Buy 2 Sensors Get 10% Discount**

# x-mind prime 2

acteon  
imaging suite

## 56 x 2D and 3D programs

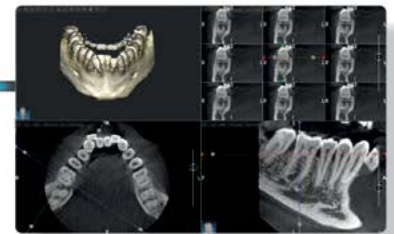
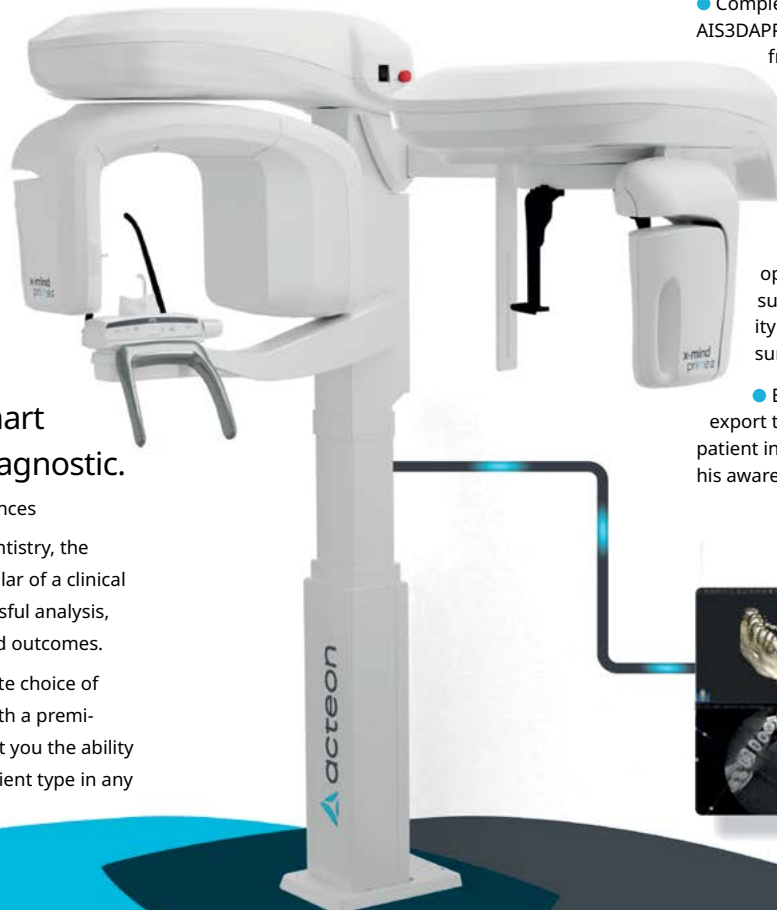
- Easy interface to use
- Complete 3D diagnostic tools, powered by AIS3DAPP, to fully exploit the clinical content from your cases
- The Implant Planning Wizard combined with a Cloud implant library allows you to easily and safely plan your surgery in just a few clicks
- The Surgical Guide Design option brings your planning to the surgical room with the highest fidelity possible with a custom designed surgical stent
- Effective patient engagement: export to portable viewer and involve the patient in the diagnostic process and raise his awareness to boost case acceptance

## Strong hardware combined with smart software to fast diagnostic.

Elevate your clinical performances

Whatever your specialty in dentistry, the quality of the diagnosis is a pillar of a clinical workflow to guarantee successful analysis, treatment plan, procedure and outcomes.

On X-MIND® prime, a complete choice of exam modalities combined with a premium-class image quality will get you the ability to successfully handle any patient type in any clinical landscape.



## Last detection technologies for high technical performance



High resolution image, up to 72,5µm of voxel size



Fast acquisition



SMAR-T option, the innovative Selective Metal Artifacts Reduction Tool

## Meet the Prime Family

X-MIND® prime is available in four models, 2D wall mounted, 3D wall mounted, 2D ceph and 3D ceph, to suit any installation setup and clinical need.



X-MIND® prime 2D ceph



X-MIND® prime 2D wall mounted



X-MIND® prime 3D wall mounted



X-MIND® prime 3D ceph

Save up to 30% on CBCT & OPG While stocks last



# C50 Full HD Camera with diagnostic Aid Option



The **C50 Camera** with diagnostic-aid option is the only camera on the market to cover so many pathologies, featuring 4 integrated vision modes for seamless navigation.

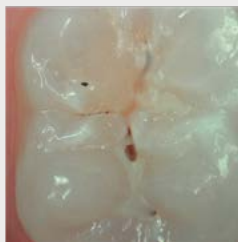


## Remarkable clinical vision

- **Full HD resolution** for superior image quality
- **Autofocus** for a clear image
- **4 camera shots available**; macrovision, single tooth, smile and portait

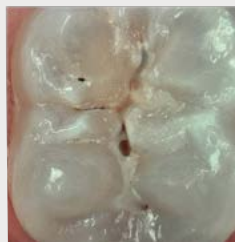
## Remarakable clinical versatility

### DAYLIGHT MODE



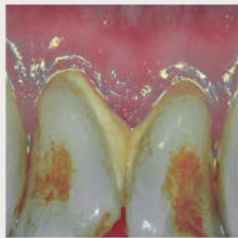
Record of **natural colors** for a better interpretation of tooth shade, pathology identification and patient follow-up.

### DAYLIGHT+ MODE



**High contrasts** emphasizing anatomic fissures and details of the dentin structure/depth.

### PERIO MODE



Enhancement of **dental plaque and gingival inflammation** thanks to chromatic amplification.

### CARIO MODE



**Caries detection** by fluorescence technique by LEDs.

To order: C50 with diagnostic Aid S\_C50\_0001

C50 without diagnostic Aid S\_C50\_0002

# Servotome II A New Impulse In Electrosurgery

**2 YEARS WARRANTY**

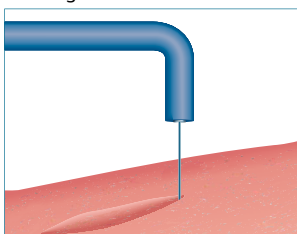
## Experience the benefits of eletrosurgery

High frequency electrosurge or orthodontics, periodontics and other oral surgery with a single footswitch, a box with 10 electrodes & a conductive bracelet.



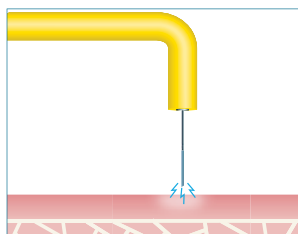
### Electrosection

Vaporizing the tissue with the active electrode makes it possible to cut quickly without damaging the edges of the incision.



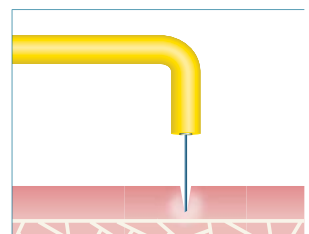
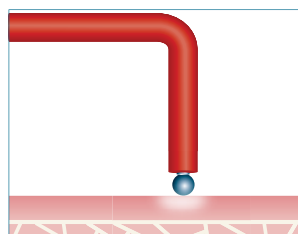
### Fulguration

Makes it possible to surface coagulate gingival tissue while protecting the underlying layer.



### Coagulation

Concentrating energy at the surface of a massive electrode makes it possible to diffuse the heat to the surrounding tissue and produce instantaneous hemostasis.





PIEZOELECTRIC SURGERY IS POWERFUL ENOUGH TO CARRY OUT EXTRACTIONS AT THE SAME SPEED<sup>1</sup> AS ROTARY INSTRUMENTS!

- Socket preservation<sup>9</sup>
- Safe for soft tissues
- Recommended for immediate implant placement
- No force needed
- 50% less pain & swelling<sup>2</sup>
- 98% less analgesics intake<sup>1</sup>

1, 2, 9 References available on file



# PIEZOTOME

CUBE



**BUY** 1 x PIEZOTOME® CUBE (F50102),  
**GET** 1 x Extraction II Tip Kit (F87546) or  
 1 x Universal Tip Kit (F87539) **FREE**

## Acteon Ultrasonic Cleaners

- HYGIENIC Aluminum control panel
- SILENT PEHD cover
- Stainless steel Structure / 2 years guarantee
- Waterproof switch

**ULTRASONICS CLEANER 5L** - 280x180x260mm  
 - Usable volume 3.2L (PH500N)

**ULTRASONICS CLEANER 5L WITH HEATER**  
 20-60°C, 280x180x260mm  
 - Usable volume 3.2L with Heater (PH500CN)



To learn more contact Dental Depot  
 on 07 3857 0011 or [sales@dentaldepot.com.au](mailto:sales@dentaldepot.com.au)

## SOFTLY Amalgamator

Softly is very stable, extremely quiet, and very easy to clean and maintain. To guarantee totally safe operation, Softly is deactivated when you open the front cover to access the capsule. Softly is made entirely of injection-molded ABS material. It complies with all electrical and mechanical safety standards.

**SAVE  
10% OFF  
RRP**



# x-mind unity

## Versatility for "extended" possibilities

With its elegant style coupled to the cutting edge patented ACE® technology (Automatic Exposure Control) and the possibility to integrate SOPIX® Plug-In sensor, X-MIND® Unity brings the standards of protection, accuracy and comfort to a next level.

X-Mind® unity is available in different configurations allowing to fulfill any operational need. Arm lengths: 0.40 m, 0.80 m, 1.10 m - installation type: top wall, bottom wall, mobile stand.

**\$6,996.00 RRP**



**BUY 2 x Plug N Sensors (Mix N Match Ok) GET 1 x Sopix 2 Plug In Dock FREE**

x-mind  
ac

x-mind  
dc

**\$4,998.00 RRP**

## Experience intuitive excellence

Designed to simplify daily operations, prioritise patient safety and enhanced dental workflows X-MIND AC/DC is the perfect choice for modern dental professionals.

Three arm lengths are available : 41 cm (16.2"), 82.5 cm (32.5") and 110 cm (43.5") and can be: Top wall mounted  
Bottom wall mounted Dental unit, ceiling and mobile version are also available.

X-MIND DC available with  
**Remote Wireless Control**

- No more wiring issues
- Cost effective
- Enhanced Convenience



To learn more contact Dental Depot  
on 07 3857 0011 or [sales@dentaldepot.com.au](mailto:sales@dentaldepot.com.au)

# EXPASYL™ EXACT

## An EXACT solution for atraumatic gingival retraction

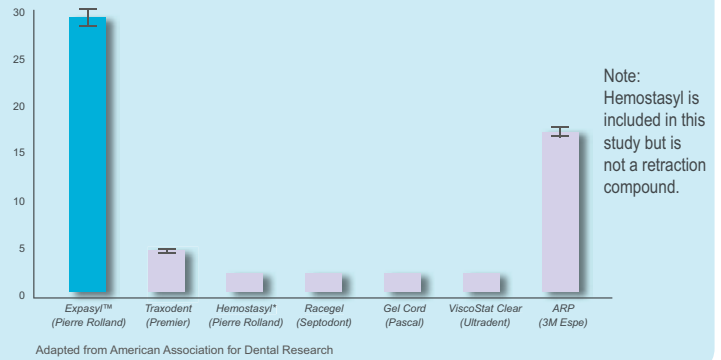
Expasyl™ Exact paste provides excellent benefits with little risks. Its viscosity has been carefully calculated to open the sulcus effectively without damaging the epithelial attachment.

Your procedure is both safe and effective.

No need to wait for the tissue healing since it has not been damaged.



## Generates pressure 1.7 to 9.2 times greater\*



\*than other retraction paste available on the market.<sup>4</sup> Data on file.

**BUY 1 x Packets of Expasyl Exact 20 or 50 pack GET 1 x Expasyl 5 Pack FREE**

All clinical applications are easy with the all-in-one air polisher

## AIR N GO EASY



- A single handpiece to cover supra-gingival prophylaxis and subgingival treatments
- Greater freedom of movement for accurate treatments
- 4 interchangeable nozzles available: SUPRA, PERIO easy, PERIO, PERIO Maintenance –
- Easier cleaning of the handpiece
- The Air-N-Go Easy handpiece is suitable for SUPRA and SUB gingival treatments.
- Sodium bicarbonate-based **CLASSIC** powder
- Glycine-based **PERIO** powders



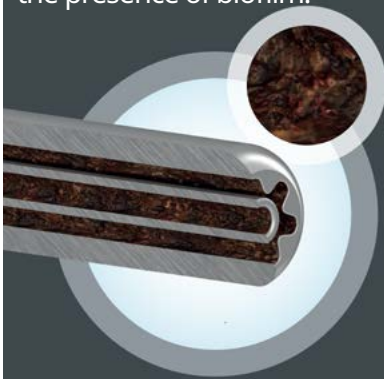
**BUY 1 x AIR N GO, GET 4 x Bottles 250g AIR-N-GO Powder FREE**

(Bonus bottles contain four flavours: peppermint, lemon, raspberry & cola. o/n F10255)

## Ris|Kontrol® your 'must have' for safe, aseptic procedures

### METAL TIPS

It is impossible to clean the inside of reusable tips adequately due to the presence of biofilm.<sup>(1)</sup>



(1,2) Data on file

**“With regard to cleaning and sterilization, disposable tips were found to be more acceptable in clinical use than metal tips.”<sup>(1)</sup>**

**Save time & money in your daily basis practice**

- Single-use
- Avoid cleaning and sterilization steps

**Ensure your clinical protection 20 times less risk means more safety and serenity on a daily basis, for safe care and greater patient satisfaction.**

**Protect your patient Single-use = reduced risk of direct or cross-contamination**

- Minimise the spread of viruses



**BUY 4 x Boxes Riskontrol tips GET 1 x Adaptor or 1 x Box Riskontrol FREE**

# NEUTRON

## ULTRASONICS



**NEUTRON® technology, a guarantee of efficacy and safety.** The perfectly-controlled vibrations and high-quality tips bring to treatments more preservation, efficacy and comfort.

Plus the widest range of tips on the market (80 different tips) with exclusive designs, alloys and coatings for clinical versatility. Exclusive tips in Pure Titanium for implant cleaning.



STEEL TIP  
QUALITY:  
THE STANDARD

NEUTRON Tips hardness, designed with a specific steel, is closest to enamel.

With our tips and linear displacement, teeth are not only cared for, but preserved

**BUY 1 x Newtron P5XS B.Led or P5 B.Led or Booster GET 1 x Handpiece FREE**

## IMPLANT CENTER 2

**The alliance of technologies for safe and atraumatic bone surgeries**

The alliance of the most advanced ultrasonic and rotary technologies ensures total independence in increasingly diverse clinical areas like: periodontics, endodontics, prophylaxis, restorative, pre-implant, implant surgeries.

Innovative, broad and robust surgical and non-surgical tips range



**2 YEARS WARRANTY**

**BONUS**

**BUY 1 x Implant Center 2® (F27203), GET 1 x Cube LED Handpiece & Cord (F12816) FREE**

### MINILED SUPERCHARGED

Wavelength: 420 - 480 nm

Power: 2,000mW/cm<sup>2</sup>

Li-Ion battery - Handpieces: anodized aluminium

Delivered with a Mini LED handpiece, a battery, a battery charger, a power supply cord with european plug, a Ø7.5mm opalescent guide and an oval light shield



### MINILED ORTHO 2

Wavelength: 420 - 480 nm

Power: 3,000mW/cm<sup>2</sup>

Li-Ion battery - Handpieces: anodized aluminium

Delivered with a handpiece, a Ø5.5mm opalescent guide, a power supply + 4 plugs, a battery, a battery charger and an oval light shield



### MINILED STANDARD

Wavelength: 420 - 480 nm

Power: 1,250mW/cm<sup>2</sup>

Li-Ion battery - Handpieces: anodized aluminium

Delivered with a Mini LED handpiece, a battery, a battery charger, a power supply cord with european plug, a Ø7.5mm opalescent guide and an oval light shield



**BUY 1 x Acteon Curing Light, GET 1 x Light Guide of your choice FREE**

Complete the order form and email to [sales@dentaldepot.com.au](mailto:sales@dentaldepot.com.au)

- |  |  |
|--|--|
| <input type="checkbox"/> <b>BUY</b> 1 x 20 or 50 Pack Expasyl Exact<br><b>GET</b> 1 x (5) Pack of Expasyl Exact <b>FREE</b>  | <input type="checkbox"/> <b>BUY</b> 1 x 1 P5XS B.LED or P5 B.LED or BOOSTER<br><b>GET</b> 1 x Handpiece <b>FREE</b>  |
| <input type="checkbox"/> <b>BUY</b> 1 x 20 Expasyl Capsules<br><b>GET</b> 1 x (5) Pack of Expasyl Exact <b>FREE</b>  | <input type="checkbox"/> <b>BUY</b> 1 x Air-N-Go Easy<br><b>GET</b> 1 x 4 Bottles 250g (4 Flavors) Air-N-Go Powder<br>(peppermint, lemon, raspberry, cola) <b>FREE</b> |
| <input type="checkbox"/> <b>BUY</b> 4 x Boxes Riskontol<br><b>GET</b> 1 x Box or 1 x Adaptor <b>FREE</b>   | <input type="checkbox"/> <b>BUY</b> 1 x Mini Led Ortho,<br>Supercharge or Standard<br><b>GET</b> 1 x Light Guide <b>FREE</b>   |
| <input type="checkbox"/> <b>BUY</b> 1 x Piezotome Cube (Ref# F50108)<br><b>GET</b> 1 x Extraction Tip kit II (Ref# F87546) or<br>Universal Kit (NEW KIT) <b>FREE</b> | <input type="checkbox"/> <b>BUY</b> 2 x Plug-In Sensor<br><b>GET</b> 1 x Plug In Dock <b>FREE</b>  |
| <input type="checkbox"/> <b>BUY</b> 1 x Implant 2 Centre (Ref# F27203)<br><b>GET</b> 1 x Cube LED Handpiece<br>& Cord (F12816) <b>FREE</b>                           | <input type="checkbox"/> <b>BUY</b> 2 x USB Sensors<br><b>GET</b> 10% Discount (Mix N Match OK)  |

To learn more contact Dental Depot  
on 07 3857 0011 or [sales@dentaldepot.com.au](mailto:sales@dentaldepot.com.au)